

# cecotec

**HYDROSTEAM 3030 ACTIVE**

Vaporeta vertical /vertical steamer




Manual de instrucciones  
Instruction manual  
Manuel d'instructions  
Bedienungsanleitung  
Manuale di istruzioni  
Manual de instruções  
Handleiding  
Instrukcja obsługi  
Návod k použití

## SAFETY INSTRUCTIONS

Before using the appliance, read the following instructions carefully. Keep this instruction manual for future reference or new users.

- Make sure that the mains voltage matches the voltage stated on the rating label of the appliance and that the wall outlet is earthed.
- Steam must not be directed towards equipment containing electrical components, such as the inside of ovens.
- The refill opening must not be opened during use.
- The appliance must be unplugged after use and before any user maintenance is carried out.
- This appliance can be used by people with reduced physical, sensory, or mental capabilities or lack of experience and knowledge if they have been given supervision or instruction concerning the use of the appliance in a safe way and understand the hazards involved. Children must not play with the appliance.
- Children should not use the product. Supervise children to prevent them from playing with the appliance. Close supervision is necessary if the appliance is used near children.
- The appliance should not be left unattended while plugged to a power supply.
- Keep the device out of reach of children when it is under tension or cooling down.
- This device is designed for domestic use only and is not intended for bars, restaurants, farmhouses, hotels, motels, and offices.
- Check the power cable regularly for visible damage. If the cable is damaged, it must be replaced by the official

Cecotec Technical Support Service or qualified personnel in order to avoid any type of danger.

- Unplug the appliance when it is not in use and when cleaning and maintenance of the appliance is to be carried out. Do not disconnect the device from the cord, use the plug instead.
- Keep the packaging materials out of the reach of children, as they could be dangerous.
- The safety valve must not be opened during operation. Follow the instructions for its opening and filling.
-  This symbol indicates steam. Do not direct steam at another person, animal, plant, electrical appliance, or electrical outlets.
- WARNING: danger of burns from hot liquids.
- Do not immerse or splash the appliance with water or any other liquid. Do not expose the appliance to rain.
- Never leave the appliance unattended while it is in operation or connected to a power outlet.
- Do not carry or pull the appliance from the power cable. Do not use the power cable as handle. Do not push the cable against corners or sharp edges. Keep the cable away from heat sources.
- If you cannot avoid using the appliance in a wet place, use a circuit breaker. Using a circuit breaker reduces the risk of electric shock.
- Use protective gear. Use always protective goggles. The protective gear, like dust masks, non-slip safety shoes, protective headgear or hearing protection will reduce the injuries.
- Use the appliance and its accessories following these instructions, considering the work to be performed. Using the appliance for any purpose other than the main purpose

may result in a hazardous situation.

- Do not touch nor use the device with wet hands.
- Do not use the appliance in enclosed spaces where there are flammable, explosive, or toxic vapours, such as thinner or oil paint.
- Do not use the appliance on leather, furniture, waxed floors, parquet, synthetic fabrics, velvet, silk, or any other material that is not resistant to steam.
- Do not fill the appliance with hot water or aromatic liquids, alcohol, or detergents. It could damage the appliance.
- Do not use the appliance if you are experiencing a short circuit.
- The appliance uses hot water to disinfect the area, which means that the safety valve, nozzles, and ironing brush cloth will become hot during use.
- Steam or liquids must not be directed towards equipment containing electrical components, such as the inside of ovens.
- Do not leave the appliance unattended when connected to the mains.
- The appliance must not be used if it has fallen, shows visible signs of damage or in case of leakage.

## 1. PARTS AND COMPONENTS

Fig. 1

1. Steam control button
2. Steam level indicator light
3. Low body
4. Mop head
5. Cord hook
6. Power switch
7. Filter
8. Power cable
9. Water tank: 330 ml
10. Water gauge
11. Mop pad
12. Sliding carpet
13. Cord hook
14. Metal tube
15. Water inlet

## 2. BEFORE USE

- This appliance includes a safety package to protect it during transport. Remove the steam cleaner from the box. Keep the original box and other elements in a safe place, as this will help you prevent damage to the steam cleaner when transporting it in the future. In case the original packaging is disposed of, make sure all packaging materials are recycled accordingly.
- Make sure all parts and components are included and in good conditions. If there is any piece missing or in bad conditions, contact the official Cecotec Technical Support Service immediately.

### **Box content.** Fig. 2

1. Handle
2. Main body
3. Mop head
4. Water tank
5. Mop bracket
6. Instruction manual

### 3. ASSEMBLY

#### Assembly steps:

1. Place the mop head in the low body by assembling it in place.
2. Install the metal tube in the low body until it is assembled in the correct place.
3. Install the water tank on the body.

### 4. OPERATION

#### 330 ml removable water tank

The water tank is in the low body. It is recommended to use distilled or demineralised water instead of tap water. Otherwise, limescale deposits may form. Fig. 3

Note:

- Turn the steam cleaner off when removing the water tank.
- Fill the water tank with the water measuring cup.
- Do not use chemical products on the water tank of the steam cleaner.
- It is recommended to remove limescale deposits at least once a month.

#### Steam level control

- The steam level indicator light will stop flashing when the steam cleaner is ready to be used.
- Next, press the steam level button to choose the desired steam level: low, medium, or high.

Fig. 4

Note:

Press the power switch and then the steam control button.

Consider that, when pressing the steam level button for the first time, steam will be in the maximum level. Set the desired level by pressing the steam control button.

#### Reusable mop cloths

The reusable mop cloths are machine-washable and suitable for use on virtually all hard floor surfaces. Your steam cleaner includes two pads. The grey and white striped pads are used for scrubbing heavily soiled floors and cleaning stubborn debris. Fig. 5

#### Steam cleaner preparation

Fig. 6.

1. Place the pad on the mop head. Make sure that the quick release tab is behind.
2. Fill up the water tank.

## ENGLISH

- a. Press the buttons on both sides of the tank to remove it.
  - b. Remove the rubber plug from the back of the tank.  
Fill the water tank and place the rubber plug again. For better results, water must be at room temperature.
  - c. Place the water tank again in the low body and carefully slide it in place.
3. Remove the power cord and introduce it in a 120 V power socket.
  4. The indicator light will turn on when the steam cleaner is ready to be used. Press the steam level button to choose the desired steam level.

Please note

After the first use or after filling the water tank, the pump can produce a sound. This is normal and it should last at least some seconds.

### Before cleaning

Sweep or vacuum the floor thoroughly before cleaning with the steam cleaner.

### Hard floors cleaning

Your steam cleaner is designed to clean hard floors, like ceramic tile, vinyl, laminate, marble, stone, and sealed hardwood floors. The use of the steam cleaner on waxed or unwaxed floors may result in a decrease in gloss. You must use the steam cleaner first in an inconspicuous area. Check the care instructions of the manufacturer of your floor.

1. Connect the unit and wait for 30 seconds for it to heat up. Choose the steam level to clean the floor: Low (delicate floors), Medium (regular cleaning) and High (resistant or sticky floors). Start cleaning by sliding the unit carefully over the floor surface.

Please note

Press the power switch and then the steam control button. Take into account that, when pressing the steam level button for the first time, steam will be in the maximum level. Set the desired level by pressing the steam control button.

2. To turn off the steam cleaner, press the steam level button until the blue light on the button is on.
3. When the steam cleaner stops emitting steam, unplug the unit. Remove the water tank, refill it, and continue cleaning.

Please note

Make sure to disinfect the floor, use a microfibre cloth and rub the floor back and forth at least three times with continuous steam. For better results, remove the pad and wash it after cleaning.

### Sliding carpet

This accessory is installed in the mop head to allow the device to slide over carpets while cleaning them.

Please note

- Make sure the sliding carpet is properly assembled in the mop head. If it is not in the correct position, the sliding carpet will fall during the use of the steam cleaner.
- Move the steam cleaner continuously until it is finished. Do not leave the steam cleaner in a steady position.

## 5. CLEANING AND MAINTENANCE

- Disconnect the power cord from the plug.
- Carefully remove the pad from the mop head. The pad can be hot.
- The remaining water in the water tank must be emptied before storing the device.
- The pad is machine-washable with hot water. Use only liquid detergents. For better results, do not use softeners nor bleach. Allow the mop to dry.
- Wind the power cord in the hook in the back of the steam cleaner.
- Clean every steam cleaner surface with a soft cloth. Store the device in a protected and dry area vertically.
- It is recommended to remove calcium in the water tank at least once a month, as well as using a descaling agent for steam cleaners.

## 6. TROUBLESHOOTING

Warning:

To reduce the risk of electric shock, turn off the device and unplug it before carrying out any maintenance or troubleshooting tasks.

### Common problems

Problem	Possible cause	Solution
Poor or no steam	Empty water tank indicator light.	Turn off the steam cleaner and fill the water tank
	Steam level not selected.	Select the steam level with the button.



## ENGLISH

Water leakage	Loose rubber plug.	Turn the steam cleaner and remove the water tank. Tighten the rubber.
Difficult use on carpets	Sliding carpet not installed.	Make sure the sliding carpet is properly assembled in the mop head.
Oxide in the water tank	The tank has not been emptied.	The remaining water in the water tank must be emptied before storing the device.
You cannot control the steam level	The steam cleaner is off.	Press the power switch and then the steam control button.
The mop gets very wet	Inadequate steam level.	Set a lower steam level.
It stops working	Misuse or problem with the product.	Contact Cecotec Technical Support Service.

## FAQs

Question	Answer
Are the cleaning cloths washable and reusable?	Yes, the micro-fibre cleaning cloths are machine washable. Use only liquid detergents. For better results, do not use softeners nor bleach. Allow the mop to dry.
On which floors can I use the steam cleaner?	The steam cleaner is designed to clean hard floors, like ceramic tile, vinyl, laminate, marble, stone, and sealed hardwood floors. The use of the steam cleaner on waxed or unwaxed floors may result in a decrease in gloss.
Do I need to activate the handle for it to release steam or is it automatic?	The steam cleaner releases steam automatically when you select the steam level. You can select the steam level by pressing the steam level button to clean the floor: Low (delicate floors), Medium (regular cleaning) and High (resistant or sticky floors).

Can I use a cleaning solution with the steam cleaner, or should I just use water?	You cannot use cleaning solutions with the steam cleaner. It is recommended to use only distilled water to increase the steam cleaner lifespan.
---	---

## 7. TECHNICAL SPECIFICATIONS

Product: HydroSteam 3030 Active

Model: 03250

1500 W, 220-240 V ~, 50-60 Hz

IP X4

Made in China | Designed in Spain

## 8. DISPOSAL OF OLD ELECTRICAL AND ELECTRONIC APPLIANCES



This symbol indicates that, according to the applicable regulations, the product and/or batteries must be disposed of separately from household waste. When this product reaches the end of its shelf life, you should dispose of the cells/batteries/accumulators and take them to a collection point designated by the local authorities.

Consumers must contact their local authorities or retailer for information concerning the correct disposal of old appliances and/or their batteries.

Compliance with the above guidelines will help protecting the environment.

## 9. TECHNICAL SUPPORT AND WARRANTY

Cecotec shall be liable to the end user or consumer for any lack of conformity that exists at the time of delivery of the product under the terms, conditions, and deadlines established by the applicable regulations.

It is recommended that repairs be carried out by qualified personnel.

If at any moment you detect any problem with your product or have any doubt, do not hesitate to contact the official Cecotec Technical Support Service at +34 96 321 07 28.

## 10. COPYRIGHT

The intellectual property rights over the texts in this manual belong to CECOTEC INNOVACIONES, S.L. All rights reserved. The contents of this publication may not, in whole or in part, be reproduced, stored in a retrieval system, transmitted, or distributed by any means (electronic, mechanical, photocopying, recording or similar) without the prior authorization of CECOTEC INNOVACIONES, S.L.

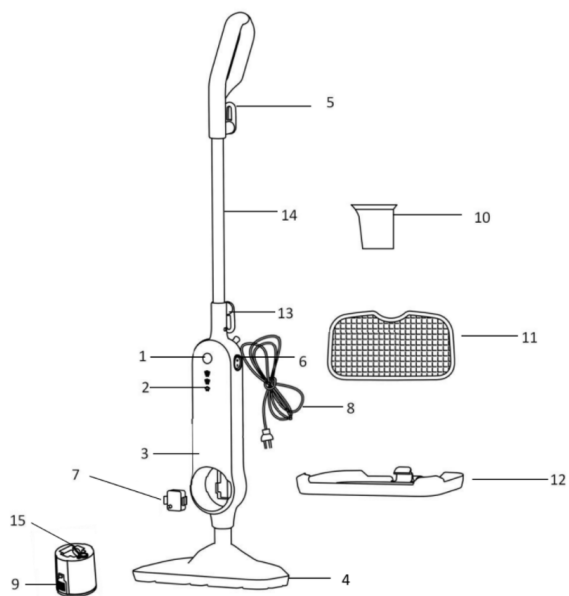


Fig./Img./Abb./Rys./Obr. 1

(1) Handle



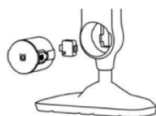
(2) Lower Body



(3) Mop Head



(4) 330mL Water Tank



(5) Mop pad



Fig./Img./Abb./Rys./Obr. 2



Fig./Img./Abb./Rys./Obr. 3

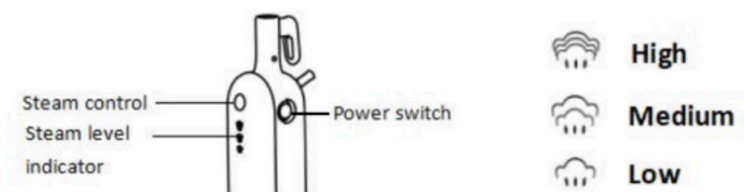


Fig./Img./Abb./Rys./Obr. 4

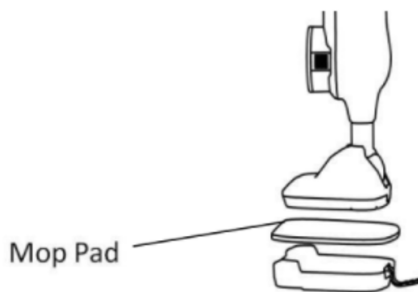


Fig./Img./Abb./Rys./Obr. 5

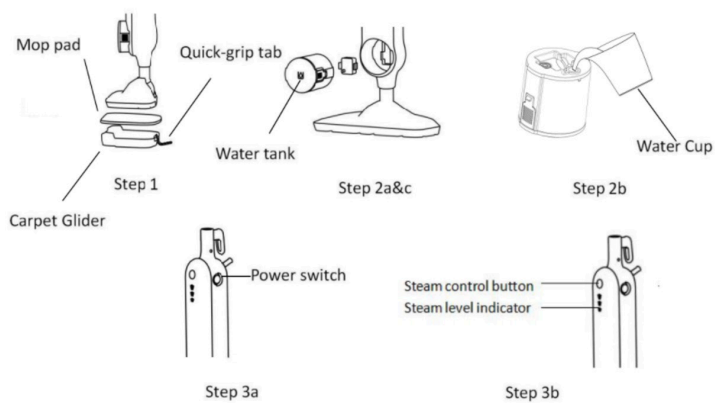


Fig./Img./Abb./Rys./Obr.6

[www.cecotec.es](http://www.cecotec.es)

Cecotec Innovaciones S.L.  
Av. Reyes Católicos, 60  
46910, Alfafar (Valencia), Spain

RP01240123